

# F110B.0 active / e-active

LIGHT - DUTY CRANES

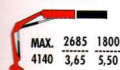
**CERTIFIED  
DYNAMIC  
PERFORMANCE**



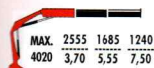
active / e-active  
standard package

<b>*D850</b> Digital Multifunction Distributor Bank <b>control</b>	<b>RCH/RCS</b> Radio Remote Control <b>control</b>	<b>FX500</b> Fast Electronic Control <b>control</b>	<b>FSC</b> Fast Stability Control <b>control</b>	<b>MOL</b> Manual Outriggers Lock <b>control</b>	<b>CPM</b> Crane Position Monitoring <b>control</b>
<b>MPES</b> Multi Power Extension System <b>performance</b>	<b>*FS</b> Flow Sharing <b>performance</b>				
<b>UHSS</b> Ultra High Strength Steel <b>strength</b>	<b>FWD</b> Fewer Welds Design <b>strength</b>	<b>CQ</b> Cast Quality <b>strength</b>	<b>RPS</b> Rack and Pinion System <b>strength</b>		

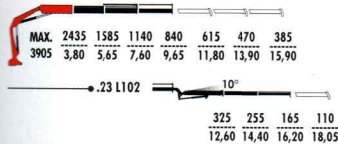
F110B.0.21



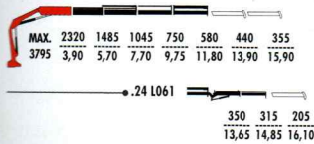
F110B.0.22



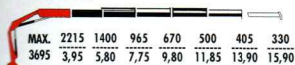
F110B.0.23



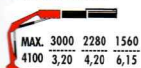
F110B.0.24



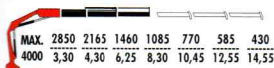
F110B.0.25



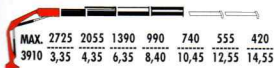
F110BC.0.22



F110BC.0.23



F110BC.0.24



C VERSION

F110B.0.21	9,89	5,75	1,85	410°	17,7	31,5	30-40	90	1110	2365	780	2180
F110B.0.22	9,48	7,80	3,80	410°	17,7	31,5	30-40	90	1220	2365	780	2180
F110B.0.23	9,28	9,90	5,85	410°	17,7	31,5	30-40	90	1325	2365	780	2180
F110B.0.23 L102	9,28	16,60	9,45	410°	17,7	31,5	30-40	90	1705	2410	900	2435
F110B.0.24	9,07	12,05	7,90	410°	17,7	31,5	30-40	90	1420	2470	780	2180
F110B.0.24 L061	9,07	15,10	9,10	410°	17,7	31,5	30-40	90	1635	2470	900	2465
F110B.0.25	8,77	14,15	9,95	410°	17,7	31,5	30-40	90	1510	2470	870	2180
F110BC.0.22	9,58	6,45	2,95	410°	17,7	31,5	30-40	90	1195	2365	780	2180
F110BC.0.23	9,38	8,55	5,00	410°	17,7	31,5	30-40	90	1300	2365	780	2180
F110BC.0.24	9,17	10,70	7,05	410°	17,7	31,5	30-40	90	1395	2470	780	2180

\* available only for e-active standard package