

F85B.0 active / e-active

LIGHT - DUTY CRANES

**CERTIFIED
DYNAMIC
PERFORMANCE**



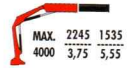
active / e-active
standard package

*D850 Digital Multi-Function Distributor Bank control	RCH/RCS Radio Remote Control control	FX500 Fibre Electronic Control control	F5C Fibre Stability Control control	MOL Manual Outriggers Lock control	CPM Crane Position Monitoring control
MPES Multi Power Extension System performance	*FS Flow Sharing performance				
UHSS Ultra High Strength Steel strength	FWD Fewer Welds Design strength	CQ Cast Quality strength	RPS Rack and Pinion System strength		

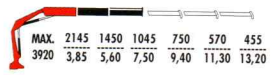
F85B.0.21	8,56	5,70	1,80	400°	11,7	31,0	30-40	90	890	2240	690	1975
F85B.0.22	8,26	7,65	3,65	400°	11,7	31,0	30-40	90	970	2240	690	1975
F85B.0.23	7,95	9,60	5,50	400°	11,7	31,0	30-40	90	1045	2240	690	1975
F85B.0.23 L061	7,95	12,65	6,70	400°	11,7	31,0	30-40	90	1195	2245	860	2020
F85B.0.24	7,85	11,50	7,35	400°	11,7	31,0	30-40	90	1120	2275	690	1975
F85BC.0.22	8,56	5,95	2,80	400°	11,7	31,0	30-40	90	955	2270	690	1975
F85BC.0.23	8,56	7,90	4,70	400°	11,7	31,0	30-40	90	1010	2270	690	1975
F85BC.0.24	6,93	9,80	6,50	400°	11,7	31,0	30-40	90	1085	2300	690	1975

* available only for e-active standard package

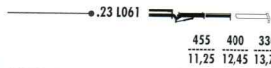
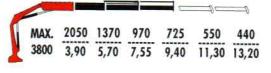
F85B.0.21



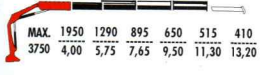
F85B.0.22



F85B.0.23

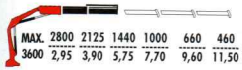


F85B.0.24

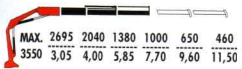


C VERSION

F85BC.0.22



F85BC.0.23



F85BC.0.24

